

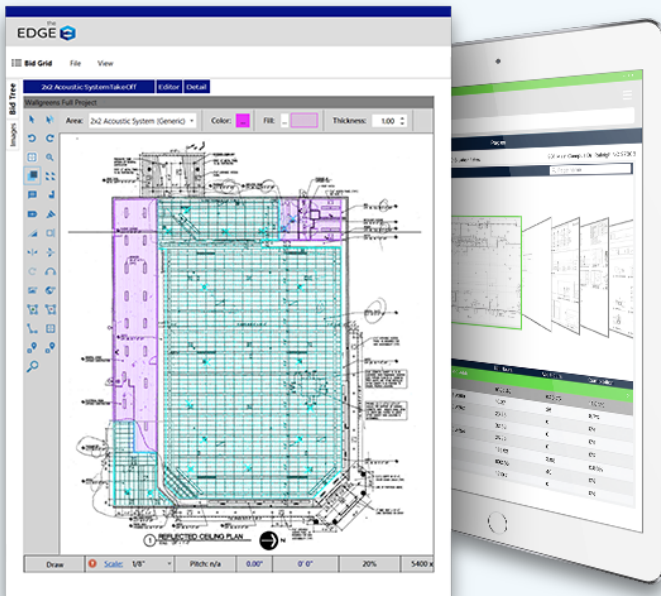
## Designed for Wall Panel Subcontractors

We know your business thrives in the details. That's why we built The EDGE™ to accommodate wall panel specific details for the most accurate estimating in the industry.

The EDGE also can produce detailed reports including profit recap reports, alternate pricing, ordering, and job costing, with either separate or combined recaps. The EDGE does exactly what you need it to do. Don't leave anything to chance. Get The EDGE.

### Exclusive Industry-Leading Features for Takeoff and Estimating. One of the Best Takeoff Systems Available!

The EDGE professional estimating software is both robust and powerful, yet so easy to learn that most contractors or professional estimators will be up and running in a week or less.



#### The EDGE features:

- Complete all-in-one takeoff and cost-estimating software solution
- Measure every single detail, including metal trim flashing, insulation, canopy, and of course, the wall panels themselves.
- Setup wall panel types and sizes for your project, do your takeoff, and The EDGE calculates a complete tally of materials and production costs based upon the system, the shop, and the field items for both stocking and pricing purposes.
- Complex calculations for materials and labor costs in real time

# The Professional Choice for Takeoff and Construction Estimating Software



## Cloud Based

Your estimates and data will safely and securely reside in the cloud, allowing both estimators and their teams to work together even when you can't get together.



## Analytics and Reporting

Insight is there whenever you need it. Access to key analytics and reporting are always at your fingertips, giving you the tools you need to make more informed decisions.



## Trade-Specific Solutions

The EDGE is completely customized to your trade, and is intelligent enough to use the same language, manufacturers, and measurements that you use in your business.



## Best Customer Service

Expect the industry's absolute best customer service from sales, support, and training staff who have actual experience in your trade. Count on us as part of your team.



## One-on-One Training

Our estimating software is intuitive, but we offer hands-on training and awesome tech support to ensure your business is able to get the most out of it.



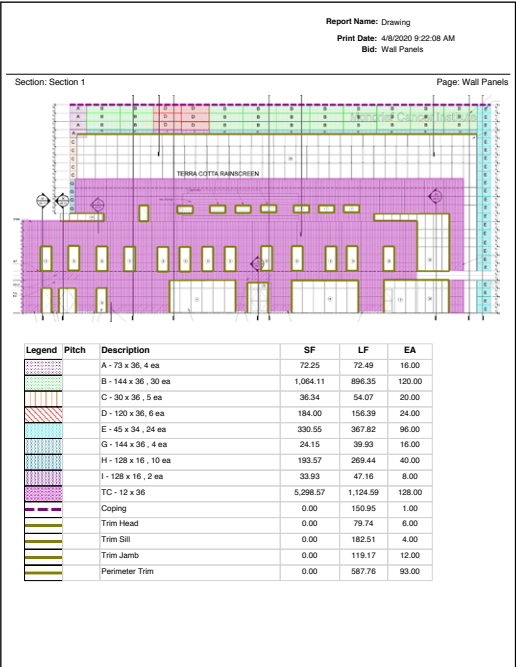
## Industry-Leading Features

Dedicated to innovation and streamlining the estimating process, The EDGE is the only solution that offers cutting-edge features like Smart Labor™, and the ability to automatically update an entire project with a click of the mouse.

# Customizable Reports

## 1. Drawing Report

Gain a competitive edge by submitting with every bid! With the visual representation of what was measured and quantities, Owners/General Contractors can see exactly what's in your bid number and have confidence that your price accurately reflects the job. Or, use to transfer knowledge to the field or other departments ensuring everyone is on the same page.



## 2. Stocking Report

Quickly determine your material needs since this report lists materials broken out by quantity. You can generate this report for your entire job or just a specific phase-area.

Report Name: Stocking Report  
Print Date: 04/08/2020 09:22:14 AM  
Bid: Wall Panels  
Scenario: Wall Panels

Description	Quantity	EU	Ord Qty	Ord Un	Qty Return	Qty Sent
<b>07-200-100-PANEL MATERIAL (Wall Panel)</b>						
1 1/2" ACM Panel A	73.00	SF	73.00	SF		
1 1/2" ACM Panel B	1,080.00	SF	1,080.00	SF		
1 1/2" ACM Panel C	37.50	SF	38.00	SF		
1 1/2" ACM Panel D	180.00	SF	180.00	SF		
1 1/2" ACM Panel E	255.00	SF	255.00	SF		
1 1/2" ACM Panel G	144.00	SF	144.00	SF		
1 1/2" ACM Panel H	142.22	SF	143.00	SF		
1 1/2" ACM Panel I	28.44	SF	29.00	SF		
ACM Joint Strip	1,670.54	SF	1,671.00	SF		
Terra Cotta Rainscreen Panels	5,298.57	SF	5,299.00	SF		
<b>07-200-102-SM MATERIAL (Wall Panel)</b>						
4'0" x 10'0" 032 Aluminum 3 Coat Kynar	25.11	EA	26.00	SHEET		
4'0" x 10'0" 22 Ga. Galv.	2.00	EA	2.00	SHEET		
<b>07-200-102-SM MATERIAL (Wall Panel)</b>						
<b>07-200-103-SHOP MATERIAL (Wall Panel)</b>						
Crates/Skids	1,851.19	EA	1,852.00	EA		
D.B.Tape	1,477.00	LF	1,477.00	LF		
Extrusion - Head	4,978.05	LF	4,979.00	LF		
Extrusion - Jamb	11,058.14	LF	11,060.00	LF		
Extrusion - Sill	4,978.05	LF	4,979.00	LF		
Gaskets	16,037.18	LF	16,038.00	LF		
Gusset Plates	7,404.76	EA	7,405.00	PC		
J-Clip	4,978.05	LF	4,979.00	LF		
Perimeter	16,037.18	LF	16,038.00	LF		
Silicone Sealant	231.40	EA	232.00	TUBE		
Stiffeners	738.00	LF	738.00	LF		
<b>07-200-103-SHOP MATERIAL (Wall Panel)</b>						
<b>07-200-105-FIELD MATERIAL (Wall Panel)</b>						
1" SM Screw	842.00	EA	842.00	PC		
1/2" 1/4" - 14 Tek	18,511.90	EA	18,512.00	PC		

### 3. Pricing Report

Shop around for the best prices from suppliers. This report lists materials, broken out by per-unit pricing. You can generate this report for your entire job or just by phase.

Report Name: Pricing Fax Report Print Date: 04/08/2020 09:22:12 AM Bid: Wall Panels Scenario: Wall Panels				
Description	OrderQuantity	OrderUnit	Unit Price	PriceUnit
1 1/2" ACM Panel A	73.00	SF		SF
1 1/2" ACM Panel B	1,080.00	SF		SF
1 1/2" ACM Panel C	38.00	SF		SF
1 1/2" ACM Panel D	180.00	SF		SF
1 1/2" ACM Panel E	255.00	SF		SF
1 1/2" ACM Panel G	144.00	SF		SF
1 1/2" ACM Panel H	143.00	SF		SF
1 1/2" ACM Panel I	29.00	SF		SF
ACM Joint Strip	1,671.00	SF		SF
Terra Cotta Rainscreen Panels	5,299.00	SF		SF
4' 0" x 10' 0" 032 Aluminum 3 Coat Kynar	26.00	SHEETS		SHEET
4' 0" x 10' 0" 22 Ga. Galv.	2.00	SHEETS		SHEET
Crates/Skids	1,852.00	EA		EA
D.B.Tape	1,477.00	LF		LF
Extrusion - Head	4,979.00	LF		LF
Extrusion - Jamb	11,050.00	LF		LF
Extrusion - Sill	4,979.00	LF		LF
Gaskets	16,038.00	LF		LF
Gusset Plates	7,405.00	PC		PC
J-Clip	4,979.00	LF		LF
Perimeter	16,038.00	LF		LF
Silicone Sealant	232.00	TUBE		TUBE
Stiffeners	738.00	LF		LF
1" SM Screw	842.00	PC		PC
1/2" 1/4" - 14 Tek	18,512.00	PC		PC
1-1/2" 1/4" - 14 Tek	14,810.00	PC		PC

### 4. Labor Report

Know exactly how much time was estimated for labor. A must-have for your supervisor or foreman to keep installers on-track. This report can be broken out by units (unit costs and hours) or time (hours and days).

Report Name: Labor Adjustments Time Print Date: 04/08/2020 09:22:11 AM Bid: Wall Panels Scenario: Wall Panels							
Description	Quantity	EU	EU Per Hr	Hours	Unit Price	Pro Un	Net Cost
<b>Panels (Subdivision 07-200-000)</b>							
<b>07-200-300-FAB LABOR (Wall Panel)</b>							
Fab Setup Panels	1,851.19	EA	50.00	37.02	\$50.00	HOURS	\$1,851.19
Labor Install 1 1/2" ACM Panel	85.00	EA	3.00	28.33	\$50.00	HOURS	\$1,416.67
Labor Install Terra Cotta Rainscreen Panels	1,766.19	EA	6.00	294.36	\$50.00	HOURS	\$14,718.25
Labor Unload Panels	1,851.19	EA	100.00	18.51	\$50.00	HOURS	\$925.58
<b>07-200-300-FAB LABOR (Wall Panel)</b>				<b>379.23</b>			<b>\$18,911.70</b>
<b>07-200-301-FIELD LABOR (Wall Panel)</b>							
Caulking @ Panel Joints	5,613.01	LF	200.00	28.07	\$50.00	HOURS	\$1,403.25
Coping Caulking	100.63	LF	100.00	1.01	\$50.00	HOURS	\$50.32
Install 1 Ply(1/2") of Insulation	1,940.17	SQ	485.04	4.00	\$50.00	HOURS	\$200.00
Install 20" Coping Cap	150.95	LF	30.00	5.03	\$50.00	HOURS	\$251.58
Install 20" Cover/Splice Plate	31.00	EA	20.00	1.55	\$50.00	HOURS	\$77.50
Install 6" Trim @ Head	79.74	LF	50.00	1.59	\$50.00	HOURS	\$79.74
Install 6" Trim @ Jamb	119.17	LF	50.00	2.38	\$50.00	HOURS	\$119.17
Install 6" Trim @ Perimeter	587.76	LF	60.00	9.80	\$50.00	HOURS	\$499.80
Install 6" Trim @ Sills	182.51	LF	50.00	3.65	\$50.00	HOURS	\$182.51
Labor Install Girts, Studs, etc	4,136.42	LF	60.00	68.94	\$50.00	HOURS	\$3,447.02
<b>07-200-301-FIELD LABOR (Wall Panel)</b>				<b>128.02</b>			<b>\$6,300.88</b>
<b>07-200-303-INDIRECT FIELD LABOR (Wall Panels)</b>							
Fabricate 20" Coping Cap	150.95	LF	100.00	1.51	\$50.00	HOURS	\$75.47
Fabricate 20" Cover/Splice Plate	31.00	EA	50.00	0.62	\$50.00	HOURS	\$31.00
Fabricate 6" Continuous Cleat	150.95	LF	200.00	0.75	\$50.00	HOURS	\$37.74
Fabricate 6" Trim @ Head	79.74	LF	100.00	0.80	\$50.00	HOURS	\$39.87
Fabricate 6" Trim @ Jamb	119.17	LF	100.00	1.19	\$50.00	HOURS	\$59.58
Fabricate 6" Trim @ Perimeter	587.76	LF	100.00	5.88	\$50.00	HOURS	\$293.88
Fabricate 6" Trim @ Sills	182.51	LF	100.00	1.83	\$50.00	HOURS	\$91.25
<b>07-200-303-INDIRECT FIELD LABOR (Wall Panels)</b>				<b>12.58</b>			<b>\$628.80</b>
<b>Panels (Subdivision 07-200-000)</b>				<b>\$16.83</b>			<b>\$25,841.37</b>
				<b>916.80</b>		<b>Total:</b>	<b>\$25,841.37</b>

## 5. Recap Report

Project overview summarizing all costs. Includes material and labor costs, and displays equipment and any markups such as taxes, overhead and profit. Use to create a proposal or just view total project costs.

Report Name: Recap						
Print Date: 4/8/2020 9:22:08 AM						
Bid: Wall Panels						
Scenario: Wall Panels						
Description	Net Cost	Markup	Markup %	Gross Price	Cost Unit	Unit Hours
<b>Panels</b>						
<b>MATERIAL</b>						
PANEL MATERIAL (WALL PANEL)	\$18,448.75			\$18,448.75	\$0.00 SFPN	
S/M MATERIAL (WALL PANEL)	\$2,060.00			\$2,060.00	\$0.00 SFPN	
SHOP MATERIAL (WALL PANEL)	\$20,467.70			\$20,467.70	\$0.00 SFPN	
FIELD MATERIAL (WALL PANEL)	\$16,076.72			\$16,076.72	\$0.00 SFPN	
MISC MATERIAL (WALL PANEL)	\$5,820.60			\$5,820.60	\$0.00 SFPN	
FREIGHT (WALL PANEL)	\$500.00			\$500.00	\$0.00 SFPN	
<b>Subtotal Material</b>	<b>\$63,373.77</b>			<b>\$63,373.77</b>	<b>\$34.234/EAP</b>	
TAX		7.50%		\$4,753.03	\$2.57 EAP	
<b>Total Material</b>	<b>\$63,373.77</b>			<b>\$68,126.80</b>	<b>\$36.802/EAP</b>	
<b>LABOR</b>						
FAB LABOR (WALL PANEL)	\$18,911.70			\$18,911.70	\$10.22 EAP	378.23
FIELD LABOR (WALL PANEL)	\$6,300.88			\$6,300.88	\$3.40 EAP	126.02
INDIRECT FIELD LABOR (WALL PANELS)	\$628.80			\$628.80	\$0.34 EAP	12.58
<b>Subtotal Labor</b>	<b>\$25,841.37</b>			<b>\$25,841.37</b>	<b>\$13.959/EAP</b>	<b>516.83</b>
BURDEN		68.00%		\$17,572.13	\$9.49 EAP	
<b>Total Labor</b>	<b>\$25,841.37</b>			<b>\$43,413.50</b>	<b>\$23.452/EAP</b>	<b>516.83</b>
<b>Subtotal Tax Classes</b>	<b>\$89,215.14</b>			<b>\$111,540.31</b>	<b>\$60.253/EAP</b>	<b>516.83</b>
<b>Subtotal</b>				<b>\$111,540.31</b>	<b>\$60.253/EAP</b>	
PROFIT		30.00% pts		\$47,802.99	\$25.82 EAP	
<b>CONTRACT AMOUNT</b>	<b>\$89,215.14</b>			<b>\$159,343.30</b>	<b>\$86.08 EAP</b>	
Profit To Sell 30.00%						
Gross Markup to sell 30.00%						
Total EAP 1851.19						
Total Hours 516.83						
EAP/Hour 3.58						
Hours/EAP 0.28						
User Code	Description	CSize	CDays	Quantity	Unit	Unit*CDay
07-200-300	FAB LABOR (Wall Panel)	2	23.64	1851.19	EAP	78.31
07-200-301	FIELD LABOR (Wall Panel)	4	3.84	1851.19	EAP	470.08
07-200-303	INDIRECT FIELD LABOR (Wall Panels)	1	1.57	1851.19	EAP	1,177.61

## 6. Consolidated Report

Create a budget from this report since it breaks down all materials and labor by amount and cost.

Report Name: Consolidated Report						
Print Date: 04/08/2020 09:22:09 AM						
Bid: Wall Panels						
Scenario: Wall Panels						
07-200-105-FIELD MATERIAL (Wall Panel)						\$16,076.72
07-200-110-MISC MATERIAL (Wall Panel)						\$5,820.60
2" Rigid Insulation	1,940.17	SQ	38,804.00	SF	\$0.15	\$5,820.60
07-200-207-FREIGHT (Wall Panel)						\$5,820.60
Sheet Metal Freight	1,271.07	EA	2.00	M-PC	\$250.00	\$500.00
07-200-207-FREIGHT (Wall Panel)						\$500.00
07-200-300-FAB LABOR (Wall Panel)						\$18,911.70
Fab Setup Panels	1,851.19	EA	37.02	HOURS	\$50.00	\$1,851.19
Labor Install 1 1/2" ACM Panel	85.00	EA	28.33	HOURS	\$50.00	\$1,418.67
Labor Install Terra Cotta Rainscreen Panels	1,766.19	EA	294.36	HOURS	\$50.00	\$14,718.25
Labor Unload Panels	1,851.19	EA	18.51	HOURS	\$50.00	\$925.59
07-200-300-FAB LABOR (Wall Panel)						\$18,911.70
07-200-301-FIELD LABOR (Wall Panel)						\$6,300.88
Caulking @ Panel Joints	5,613.01	LF	28.07	HOURS	\$50.00	\$1,403.25
Coping Caulking	100.63	LF	1.01	HOURS	\$50.00	\$50.32
Install 1 Ply(s) of Insulation	1,940.17	SQ	4.00	HOURS	\$50.00	\$200.00
Install 20" Copping Cap	150.95	LF	5.03	HOURS	\$50.00	\$251.58
Install 20" Cover/Splice Plate	31.00	EA	1.55	HOURS	\$50.00	\$77.50
Install 8" Trim @ Head	79.74	LF	1.59	HOURS	\$50.00	\$79.74
Install 8" Trim @ Jambes	119.17	LF	2.38	HOURS	\$50.00	\$119.17
Install 8" Trim @ Perimeter	587.76	LF	9.80	HOURS	\$50.00	\$489.80
Install 8" Trim @ Sills	182.51	LF	3.65	HOURS	\$50.00	\$182.51
Labor Install Glc's, Studs, etc	4,136.42	LF	68.94	HOURS	\$50.00	\$3,447.02
07-200-301-FIELD LABOR (Wall Panel)						\$6,300.88
07-200-303-INDIRECT FIELD LABOR (Wall Panels)						\$628.80
Fabricate 20" Copping Cap	150.95	LF	1.51	HOURS	\$50.00	\$75.47
Fabricate 20" Cover/Splice Plate	31.00	EA	0.62	HOURS	\$50.00	\$31.00
Fabricate 8" Continuous Cleat	150.95	LF	0.75	HOURS	\$50.00	\$37.74
Fabricate 8" Trim @ Head	79.74	LF	0.80	HOURS	\$50.00	\$39.87
Fabricate 8" Trim @ Jambes	119.17	LF	1.19	HOURS	\$50.00	\$59.58
Fabricate 8" Trim @ Perimeter	587.76	LF	5.88	HOURS	\$50.00	\$293.88
Fabricate 8" Trim @ Sills	182.51	LF	1.83	HOURS	\$50.00	\$91.25
07-200-303-INDIRECT FIELD LABOR (Wall Panels)						\$628.80
<b>Panels (Subdivision 07-200-000)</b>						<b>\$89,215.14</b>
					<b>Total:</b>	<b>\$89,215.14</b>

Bid sharp. Build sharp.

561-276-9100 | [www.estimateingedge.com](http://www.estimateingedge.com)

The E logo, The Estimating Edge, The EDGE, Smart Labor and other marks are trademarks of The Estimating Edge LLC. © 2020 Estimating Edge LLC. All rights reserved. 0520-1