

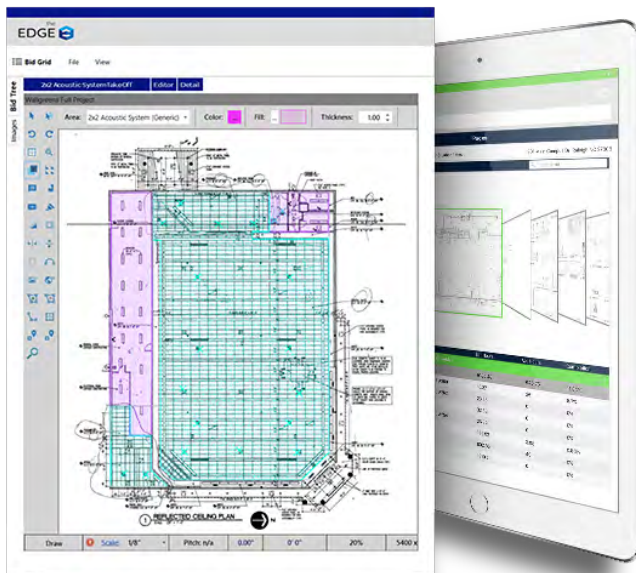
Designed for Drywall Subcontractors

Unlike other solutions, The EDGE™ was designed specifically for commercial Drywall subcontractors, and it shows. For example, our Conditions feature is easy to set up and makes takeoff a breeze. Set the Condition properties for one wall type, and then duplicate it and alter it for other wall types specified in the site plans.

The EDGE is also completely customized to the way your business operates, with databases containing suppliers and manufacturers of interior components that you already use, including USA Gypsum and USG specialty groups. It includes systems for both rated and non-rated walls.

Exclusive Industry-Leading Features for Takeoff and Estimating. One of the Best Takeoff Systems Available!

The EDGE professional estimating software is both robust and powerful, yet so easy to learn that most contractors or professional estimators will be up and running in a week or less.



The EDGE features:

- Complete all-in-one takeoff and cost-estimating software solution
- Create a condition for one wall type, duplicate it and then alter it for other wall types.
- The Smart Labor™ feature allows you to intelligently vary labor rates based upon parameters you set. Let's say you know your team can hang an 8-foot wall at about 12 feet per hour. With Smart Labor you can set a different rate for higher walls to accommodate for time spent moving ladders and hoisting drywall.
- Universal edits automatically calculates all changes throughout the entire estimate.
- The EDGE knows exactly what kind of measurement to use based on what's measured. You don't have to worry about manually setting takeoff measurements to linear foot for partitions and soffits, square feet for ceilings, or counts for corner beads and columns.
- Complex calculations for materials and labor costs in real time

The Professional Choice for Takeoff and Construction Estimating Software



Cloud Based

Your estimates and data will safely and securely reside in the cloud, allowing both estimators and their teams to work together even when you can't get together.



Analytics and Reporting

Insight is there whenever you need it. Access to key analytics and reporting are always at your fingertips, giving you the tools you need to make more informed decisions.



Trade-Specific Solutions

The EDGE is completely customized to your trade, and is intelligent enough to use the same language, manufacturers, and measurements that you use in your business.



Best Customer Service

Expect the industry's absolute best customer service from sales, support, and training staff who have actual experience in your trade. Count on us as part of your team.



One-on-One Training

Our estimating software is intuitive, but we offer hands-on training and awesome tech support to ensure your business is able to get the most out of it.



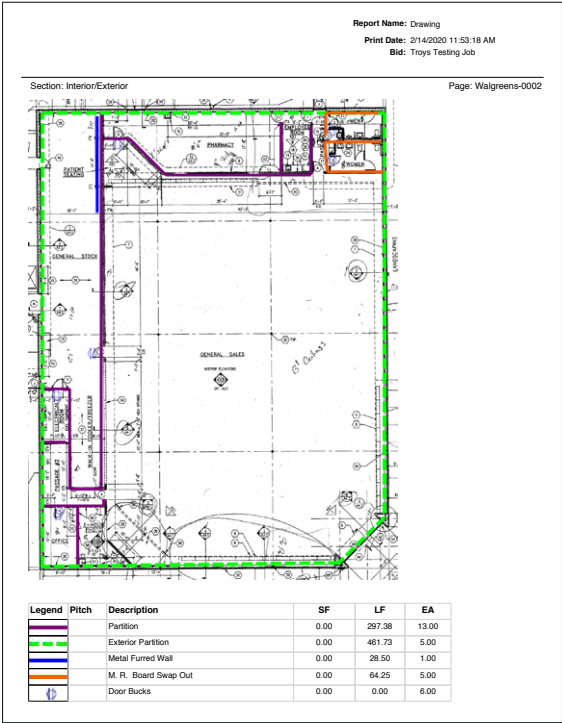
Industry-Leading Features

Dedicated to innovation and streamlining the estimating process, The EDGE is the only solution that offers cutting-edge features like Smart Labor™, and the ability to automatically update an entire project with a click of the mouse.

Customizable Reports

1. Drawing Report

Gain a competitive edge by submitting with every bid! With the visual representation of what was measured and quantities, Owners/General Contractors can see exactly what's in your bid number and have confidence that your price accurately reflects the job. Or, use to transfer knowledge to the field or other departments ensuring everyone is on the same page.



2. Stocking Report

Quickly determine your material needs since this report lists materials broken out by quantity. You can generate this report for your entire job or just a specific phase-area.

Report Name: Stocking Report
Print Date: 02/14/2020 11:53:18 AM
Bid: Troys Testing Job
Scenario: Test 1

Description	Quantity	EU	Ord Qty	Ord Un	Qty Return	Qty Sent
09-100-100-DW Interior Frame Materials						
20 Ga. 3-5/8"x 10' 0"	12.00	EA	12.00	PCS		
25 Ga. 3-5/8"x 10' 0"	594.77	LF	59.48	PCS		
25 Ga. 3-5/8"x 12' 0"	251.00	EA	251.00	PCS		
7/8"x 1-1/4" 12' 0"	21.00	EA	21.00	PCS		
09-100-100-DW Interior Frame Materials						
09-100-110-DW Exterior Frame Materials						
18 Ga. 6"x 10' 0"	923.47	LF	92.35	PCS		
18 Ga. 6"x 12' 0"	377.00	EA	377.00	PCS		
09-100-110-DW Exterior Frame Materials						
09-100-120-DW Interior Gypsum Materials						
5/8"x 4' 0"x 12' 0"	594.77	SF	12.39	PCS		
09-100-120-DW Interior Gypsum Materials						
09-100-150-DW Finishing Materials						
5 Gal. pail ready mix compound	7,137.23	SF	16.00	4.5GAL		
09-100-150-DW Finishing Materials						

3. Pricing Report

Shop around for the best prices from suppliers. This report lists materials, broken out by per-unit pricing. You can generate this report for your entire job or just by phase.

Report Name: Pricing Purchase Report Print Date: 02/14/2020 11:53:19 AM Bid: Troys Testing Job Scenario: Test 1						
Description	Order Qty	Ord Un	Unit Price	Price	Price Un	NetCost
20 Ga. 3-5/8"x 10' 0" stud	12.00	PCS	\$1.50		LF	180.00
25 Ga. 3-5/8"x 10' 0" track	59.48	PCS	\$1.50		LF	892.15
25 Ga. 3-5/8"x 12' 0" stud	251.00	PCS	\$1.50		LF	4,518.00
7/8"x 1-1/4" 12' 0" Metal Fur	21.00	PCS	\$1.25		LF	315.00
18 Ga. 6"x 10' 0" exterior track	92.35	PCS	\$1.75		LF	1,616.06
18 Ga. 6"x 12' 0" exterior stud	377.00	PCS	\$1.75		LF	7,917.00
5/8"x 4' 0"x 12' 0" FC board	12.39	PCS	\$50.00		SF	29,738.47
5 Gal. pail ready mix compound	16.00	4.5GAL	\$13.86		PAILS	221.76
					Total:	\$45,398.45

4. Labor Report

Know exactly how much time was estimated for labor. A must-have for your supervisor or foreman to keep installers on-track. This report can be broken out by units (unit costs and hours) or time (hours and days).

Report Name: Labor Adjustments Time Print Date: 02/14/2020 11:53:20 AM Bid: Troys Testing Job Scenario: Test 1							
Description	Quantity	EU	EU Per Hr	Hours	Unit Price	Prc Un	Net Cost
Drywall (Subdivision 09-100-000)							
09-100-220-DW Interior Framing Labor							
Door Buck	6.00	EA	2.00	3.00	\$20.00	HOURS	\$60.00
Frame 25 Ga. 3-5/8" wall to 12' 0" @ 16" oc	297.38	LF	20.00	14.87	\$20.00	HOURS	\$297.38
Fur 2 run(s) of 25 Ga. 7/8"x 1-1/4" Metal Fur	57.00	LF	50.00	1.14	\$20.00	HOURS	\$22.80
Fur verticle 25 Ga. 7/8"x 1-1/4" Metal Fur to 12' 0" wall	192.00	LF	50.00	3.84	\$20.00	HOURS	\$76.80
09-100-220-DW Interior Framing Labor					22.85		\$456.98
09-100-230-DW Exterior Framing Labor							
Frame 18 Ga. 6" exterior wall to 12' 0" @ 16" oc	461.73	LF	30.00	15.39	\$20.00	HOURS	\$307.82
09-100-230-DW Exterior Framing Labor					15.39		\$307.82
09-100-250-DW Interior Hanging Labor							
Hang 5/8" x 4' 0" x 12' 0" FC bottoms to 10' 0"	6,232.70	SF	25.00	249.31	\$20.00	HOURS	\$4,986.16
Hang 5/8" x 4' 0" x 12' 0" FC bottoms to 12' 0"	-770.94	SF	25.00	-30.84	\$20.00	HOURS	(\$616.75)
Hang 5/8" x 4' 0" x 12' 0" FC tops from 10' 0" to 12' 0"	1,246.54	SF	15.00	83.10	\$20.00	HOURS	\$1,662.05
Hang 5/8" x 4' 0" x 12' 0" MR bottoms to 12' 0"	770.94	SF	20.00	38.55	\$20.00	HOURS	\$770.94
Hang control joint	96.00	LF	20.00	4.80	\$20.00	HOURS	\$96.00
09-100-250-DW Interior Hanging Labor					344.92		\$6,896.40
09-100-270-DW Finish Labor							
Finish bottoms to 10' 0"	10,850.02	SF	100.00	108.50	\$22.50	HOURS	\$2,441.25
Finish control joint	96.00	LF	100.00	0.96	\$22.50	HOURS	\$21.60
Finish tops from 10' 0" to 11' 0"	461.73	SF	75.00	6.16	\$22.50	HOURS	\$138.52
Finish tops from 10' 0" to 12' 0"	1,246.54	SF	75.00	16.62	\$22.50	HOURS	\$373.96
Fire tape from 11' 0" to 12' 0"	461.73	SF	100.00	4.62	\$22.50	HOURS	\$103.89
09-100-270-DW Finish Labor					136.85		\$3,079.23
Drywall (Subdivision 09-100-000)					\$20.01		\$10,742.43
					\$20.01	Total:	\$10,742.43

5. Recap Report

Project overview summarizing all costs. Includes material and labor costs, and displays equipment and any markups such as taxes, overhead and profit. Use to create a proposal or just view total project costs.

Report Name: Recap							
Print Date: 2/14/2020 11:53:21 AM							
Bid: Troys Testing Job							
Scenario: Test 1							
Description	Net Cost	Markup	Markup \$	Gross Price	Cost Unit	Unit	Hours
Drywall							
MATERIAL							
D/W INTERIOR FRAME MATERIALS	\$5,905.15			\$5,905.15	\$7.50	LFFR	
D/W EXTERIOR FRAME MATERIALS	\$9,533.06			\$9,533.06	\$12.10	LFFR	
D/W INTERIOR GYPSUM MATERIALS	\$29,738.47			\$29,738.47	\$3.98	SFDW	
D/W FINISHING MATERIALS	\$221.76			\$221.76	\$0.02	SFFN	
Subtotal Material	\$45,398.45			\$45,398.45		\$6.070/SFDW	
TAX		7.00%		\$3,177.89		\$0.42 SFDW	
Total Material	\$45,398.45			\$48,576.34		\$6.495/SFDW	
LABOR							
D/W INTERIOR FRAMING LABOR	\$456.98			\$456.98	\$0.58	LFFR	22.85
D/W EXTERIOR FRAMING LABOR	\$307.82			\$307.82	\$0.39	LFFR	15.39
D/W INTERIOR HANGING LABOR	\$6,898.40			\$6,898.40	\$0.92	SFDW	344.92
D/W FINISH LABOR	\$3,079.23			\$3,079.23	\$0.41	SFDW	196.85
Subtotal Labor	\$10,742.43			\$10,742.43		\$1.436/SFDW	520.01
BURDEN		50.00%		\$5,371.22		\$0.72 SFDW	
Total Labor	\$10,742.43			\$16,113.65		\$2.154/SFDW	520.01
Subtotal Tax Classes	\$56,140.88			\$64,698.99		\$8.649/SFDW	520.01
OVERHEAD		15.00%		\$9,703.50		\$1.30 SFDW	
Subtotal	\$74,393.49			\$94,402.49		\$9.947/SFDW	
PROFIT		25.00%		\$18,598.37		\$2.49 SFDW	
CONTRACT AMOUNT	\$56,140.88			\$92,991.86		\$12.43 SFDW	
BOND		0.00%		\$0.00		\$0.00 SFDW	

6. Consolidated Report

Create a budget from this report since it breaks down all materials and labor by amount and cost.

Report Name: Consolidated Report							
Print Date: 02/14/2020 11:53:21 AM							
Bid: Troys Testing Job							
Scenario: Test 1							
Description	Quantity	EU	Ord Qty	Ord Un	Unit Price	Pr Unit	Net Cost
Drywall (Subdivision 09-100-000)							
09-100-100-DW Interior Frame Materials							
20 Ga. 3-5/8" 10' 0" stud	12.00	EA	12.00	PCS	\$1.50	LF	\$180.00
25 Ga. 3-5/8" 10' 0" track	594.77	LF	594.87	PCS	\$1.50	LF	\$892.15
25 Ga. 3-5/8" 12' 0" stud	251.00	EA	251.00	PCS	\$1.50	LF	\$4,518.00
7/8" x 1-1/4" 12' 0" Metal Fur	21.00	EA	21.00	PCS	\$1.25	LF	\$315.00
09-100-110-DW Exterior Frame Materials							\$5,905.15
09-100-110-DW Exterior Frame Materials							
18 Ga. 6" x 10' 0" exterior track	923.47	LF	92.35	PCS	\$1.75	LF	\$1,616.06
18 Ga. 6" x 12' 0" exterior stud	377.00	EA	377.00	PCS	\$1.75	LF	\$7,917.00
09-100-110-DW Exterior Frame Materials							\$9,533.06
09-100-120-DW Interior Gypsum Materials							
5/8" x 4' 0" x 12' 0" FC board	594.77	SF	12.39	PCS	\$50.00	SF	\$29,738.47
09-100-120-DW Interior Gypsum Materials							\$29,738.47
09-100-150-DW Finishing Materials							
5 Gal. pall ready mix compound	7,137.23	SF	16.00	4.5GAL	\$13.86	PAILS	\$221.76
09-100-150-DW Finishing Materials							\$221.76
09-100-220-DW Interior Framing Labor							
Door Buck	6.00	EA	3.00	HOURS	\$20.00	HOURS	\$60.00
Frame 25 Ga. 3-5/8" wall to 12' 0" @ 16" o/c	297.38	LF	14.87	HOURS	\$20.00	HOURS	\$297.38
Fur 2 runs of 25 Ga. 7/8" x 1-1/4" Metal Fur	57.00	LF	1.14	HOURS	\$20.00	HOURS	\$22.80
Fur verticle 25 Ga. 7/8" x 1-1/4" Metal Fur to 12' 0" wall	192.00	LF	3.84	HOURS	\$20.00	HOURS	\$76.80
09-100-220-DW Interior Framing Labor							\$456.98
09-100-230-DW Exterior Framing Labor							
Frame 18 Ga. 6" exterior wall to 12' 0" @ 16" o/c	461.73	LF	15.39	HOURS	\$20.00	HOURS	\$307.82
09-100-230-DW Exterior Framing Labor							\$307.82
09-100-250-DW Interior Hanging Labor							
Hang 5/8" x 4' 0" x 12' 0" FC bottoms to 10' 0"	6,232.70	SF	249.31	HOURS	\$20.00	HOURS	\$4,986.16
Hang 5/8" x 4' 0" x 12' 0" FC bottoms to 12' 0"	-770.94	SF	-30.84	HOURS	\$20.00	HOURS	(\$616.75)
Hang 5/8" x 4' 0" x 12' 0" FC tops from 10' 0" to 12' 0"	1,246.54	SF	83.10	HOURS	\$20.00	HOURS	\$1,662.05
Hang 5/8" x 4' 0" x 12' 0" MR bottoms to 12' 0"	770.94	SF	38.55	HOURS	\$20.00	HOURS	\$770.94
Hang control joint	96.00	LF	4.80	HOURS	\$20.00	HOURS	\$96.00
09-100-250-DW Interior Hanging Labor							\$6,898.40
09-100-270-DW Finish Labor							
Finish bottoms to 10' 0"	10,850.02	SF	108.50	HOURS	\$22.50	HOURS	\$2,441.26
Finish control joint	96.00	LF	0.96	HOURS	\$22.50	HOURS	\$21.60

Bid sharp. Build sharp.

561-276-9100 | www.estimateingedge.com

The E logo, The Estimating Edge, The EDGE, Smart Labor and other marks are trademarks of The Estimating Edge LLC. © 2020 Estimating Edge LLC. All rights reserved. 0420